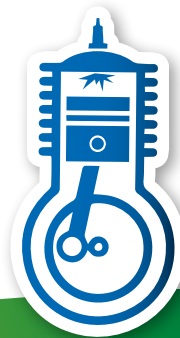


**MM**

*green*



# SELF-PROPELLED SPRAYER "TS-S" LINE

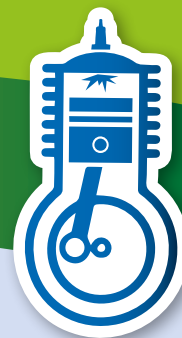
## TS-S LINE

- ✓ **COMPACT**
- ✓ **VERSATILE**
- ✓ **CONFIGURABLE  
ACCORDING TO  
YOUR NEEDS**
- ✓ **TANK CAPACITY  
200-300 LITERS**



**MM**<sup>®</sup>

WWW.MMSPRAY.IT



TS-S SPRAYER  
WITH HOSE REEL



TS-S SPRAYER WITH  
TOMATO TREATMENT  
BOOM (KITPOM)

## TECHNICAL DATA

- ☑ **Self-supporting frame** in tubular steel with epoxy paint, resistant to wear over time.
- ☑ Rear hydrostatic **transmission** without maintenance, with foot pedal.
- ☑ "Tractor" rear **wheels**, ribbed front wheels.
- ☑ 10km/h full **speed**.
- ☑ **Polyethylene tank** of 200 and 300 liters with filter.
- ☑ 40 L/min 40 Bar 3-diaphragm **pump** with 3-way pressure regulator.
- ☑ HONDA GX390 OHV 13.5 HP **engine** with electric start.
- ☑ 12V 27A gel **battery**.
- ☑ Tow hitch.
- ☑ **Ideal for use in greenhouses** thanks to its small size (**width 80 cm**).
- ☑ **14% maximum slope**.
- ☑ **Dimensions**  
200 L: 80x140x110 cm  
300 L: 80x145x110 cm
- ☑ **Empty weight**  
200 L: 280 kg  
300 L: 302 kg



COMFORTABLE DRIVING PLACE  
WITH SEAT AND CONTROLS EASILY  
ACCESSIBLE



ERGONOMIC STEERING WHEEL  
AND PARKING BRAKE LEVER



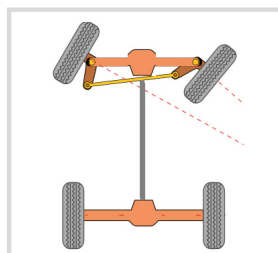
SIMPLE ADVANCE FOOT PEDAL



HYDROSTATIC TRANSMISSION



INTEGRATED COMPARTMENT WITH  
ENGINE AND PUMP



TURNING RADIUS OF 250 cm



14% MAXIMUM SLOPE



**M.M. S.r.l.**  
Via R. Dalla Costa, 110  
41122 Modena - ITALY  
Tel. +39 059 25 16 54  
Fax +39 059 25 17 11  
[mm@mmspray.it](mailto:mm@mmspray.it)



[www.mmspray.it](http://www.mmspray.it)