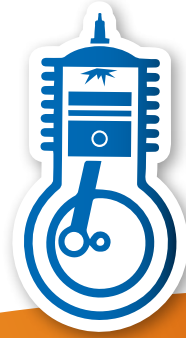


M

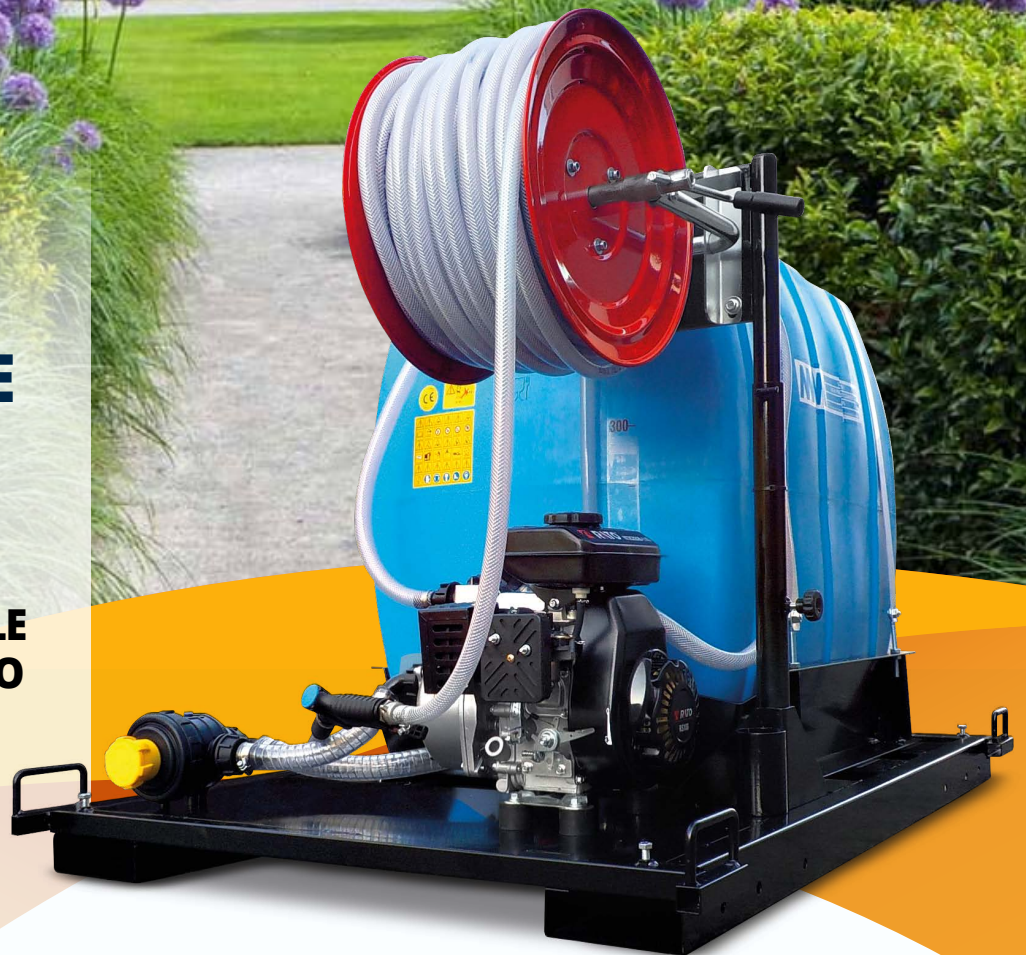
agriculture



DEMOUNT SPRAYER FOR IRRIGATION AND WATER TRANSFER "GS-TI" LINE

GS-TI LINE

- ✓ **COMPACT**
- ✓ **VERSATILE**
- ✓ **CONFIGURABLE
ACCORDING TO
YOUR NEEDS**
- ✓ **TANK
CAPACITY
500 L**

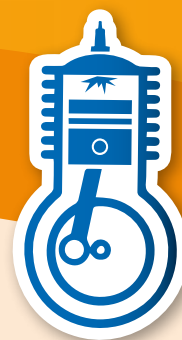


M

WWW.MMSPRAY.IT



VERSION WITH 12V ELECTRIC PUMP



VERSION WITH SELF-PRIMING PUMP

TECHNICAL DATA

- ☑ **Self-supporting steel tubular frame** with epoxy powder coating, resistant to wear over time. Prepared for mounting on pick-up trucks, equipped with handles to be moved by hand, with forklifts or cranes.
- ☑ **5 m hose** for irrigation supplied as standard.
- ☑ **500 L polyethylene tank** with filter.
- ☑ **Pump** to choose:
 - Electric 12V, 18 L/min, pump head 40 m, height of suction 3 m.
 - Self-priming 120 - 500 L/min (depending on the model), pump head 20-29 m - height of suction 7 m. Delivery head 20-29 m, H suction 7 m.
- ☑ **Engine** to choose:
 - Electric 0.25 Hp
 - 4-stroke 2.5 or 6 Hp (depending on the model)
- ☑ Possibility to mount (**optional**):
 - manual hose reel with 25 m of hose
 - automatic hose reel with 20 m of hose
 - watering wand.
- ☑ **Dimensions**
500 L: 90x130x127 cm
- ☑ **Weight**
Electric version: 69 kg
4-stroke engine version: 116 - 122 kg (depending on the model)
- ☑ **Different tank sizes**
1000 L: 102x210x160 cm
1500 L: 130x245x165 cm
2000 L: 145x255x165 cm



WATERING WAND FOR IRRIGATION (LDOC)



MANUAL HOSE REEL WITH HOSE FOR IRRIGATION (OPTIONAL)



M.M. S.r.l.
Via R. Dalla Costa, 110
41122 Modena - ITALY
Tel. +39 059 25 16 54
Fax +39 059 25 17 11
mm@mmspray.it



www.mmspray.it